



An Aerial View of the 1939 World's Fair
Flushing Meadow Park, Queens

How Much Do YOU Know About the County of Queens?

Ever wonder what your block looked like 80 years ago? Was the Van Wyck Expressway always so crowded? What do "Vleigh" and "Pomonok" mean? What famous people have called Queens home?

Now there's a website to help you answer these and lots of other questions. The Central Queens Historical Association

(www.CQHA.net) has tapped into an extensive

archive accumulated over nearly thirty years,

thanks to the efforts of web designer Daniel R.

Heisler (shadchan1@yahoo.com) and the Historic Society's

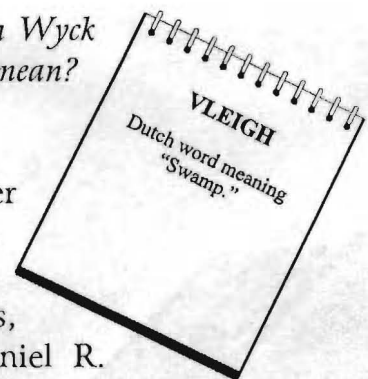
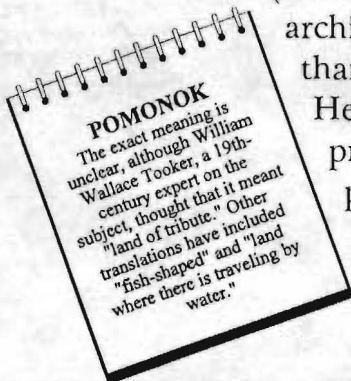
president Jeff Gottlieb (jeffgottlieb@hotmail.com) and executive vice

president S. Malkah Cohen (smalkah@yahoo.com). The site is an

invaluable source of photographs not available elsewhere and

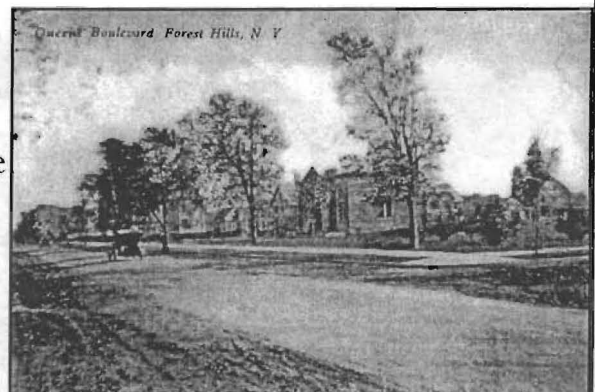
draws on an archive of over eighty articles written by Mr.

Gottlieb in the last two decades.



CQHA President Jeff Gottlieb, various members of the Board and the community commemorate Dizzy Gillespie & Billie Holliday with plaques on their former homes.

Visit
www.CQHA.net
today! For more
information, please
call Jeff Gottlieb
(917-376-4496),
Danny Heisler
(347-740-6552),
or S. Malkah
Cohen (718-575-
9319).



Queens Boulevard in 1913